



**Fast, Simple And Powerfully Versatile.
The Way Label Making Should Be**

Fast, Simple & Powerfully Versatile. The Way Label Making Should Be

JUST WALK UP AND PRINT

So simple, your whole team can use it. Just type and print – it's really that easy.



BBP™ 31 SIGN & LABEL PRINTER



SMART SUPPLIES

Drop in your material and ribbon cartridges, the printer does the rest.
 These supplies feature smart cell technology that tells the printer exactly how to format your label according to the material that's inserted.



TOUCH AND GO DISPLAY

All the features you use most, right at your fingertips.
 This touch screen display lets you drag and drop objects and text until your label looks exactly the way you want it.



APPLICATIONS AROUND

This one printer can take on all the different labelling needs of your facility.
 There are so many options packed into this printer, your applications are endless.



STAND ALONE OR PC OPERATION

You decide how you'd like to use the printer – either connected to your PC, or as a stand alone, mobile unit.

Powerful software options
 MarkWare™ Facility Identification Software offers the industry's most advanced PC design and editing capabilities. There's more fonts, graphics, templates and import tools – and that's just the beginning.

Brady Materials Are Made To Impress

BRADY LABELS LAST THE LONGEST

Brady labels stick and stay stuck, plain and simple. In fact, they last up to 10 years outdoors*. You only need to make them once. And after you make them, they're there for good – whether you like it or not.

OPTIONS. LOTS OF OPTIONS

We make labels for specific applications. Your applications. That's why we have hundreds of label types and sizes to choose from. When you choose a label, we want you to be 100% confident that it's the right label for your exact application.



WE SET THE BAR HIGH

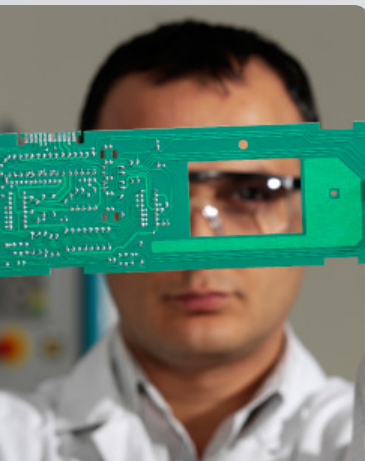
There's a reason why Brady materials lead the industry in durability and performance. It's because we design and manufacture the labels ourselves. We put our materials through rigorous, painstaking tests and trials – and nothing leaves our doors until it passes with flying colours. We set the standards high – because we know it's the only way our materials can exceed your expectations.

THE BBP™31 SIGN & LABEL PRINTER CAN PRINT ON HUNDREDS OF DIFFERENT LABELS, TAPES, TAGS AND MATERIALS, INCLUDING:

- Indoor/Outdoor Vinyl (B-595)
- High Performance Polyester (B-569)
- Brushed Gold Polyester (B-575)
- Pre-printed Pre-cut Blank Sign Headers (B-595)
- Pre-printed Right-To-Know Chemical Labels (B-595)
- BradyGlo™ High-Intensity Photoluminescent Tape (B-526)
- Retro-reflective Tape (B-584)
- Pre-cut General-Purpose Blank Labels (B-595)
- Non-adhesive Tag Stock (B-551)
- Repositionable Vinyl (B-581)
- Printable Magnetic Supply (B-509)
- Cold Temperature Application Polyester (B-549)
- Self-laminating Cable & Wire Labels (B-427)
- Tamper-evident Metallised Polyester Tape (B-438)
- High Temp Metallised Polyester Tape (B-565)

*Average expected outdoor life of product will depend on user definition of failure, climatic conditions, mounting techniques and material colour. The up to 10 year outdoor durability applies to the vinyl label stock only; ribbon durability will vary. A polyester overlaminate is recommended for harsh environments - long term exposure to wind and rain.

Brady: A brand you can trust.



WE INVENTED THESE PRINTERS

Brady is a leader in industrial label printing. We are experts in designing and building label printers, and we continue to re-invent the space time and time again. We test our materials in extremely harsh conditions to make sure they'll hold up when you need them to – so you only need to label something once.

WE EARN YOUR CONFIDENCE

When we say our printers are the best, we prove it. We come to your facility and demo our printers first-hand, so it's easy for you to purchase with confidence knowing you're choosing the right printer for your needs.

WE GET TO KNOW YOUR NEEDS

Understanding your business needs is our top priority. We get to know you and your applications first, so we can then make the right recommendations.



B-595 INDOOR/OUTDOOR VINYL

FOR GENERAL FACILITY AND SAFETY IDENTIFICATION:
OUR BEST INDUSTRIAL VINYL YET

- Durable, low- shrink vinyl with our most aggressive adhesive
- Conforms to irregular, curved, rough and highly textured surfaces (painted cinder blocks, uneven wood, textured plastics, paper-jacketed pipes, powder-coated surfaces)
- Adheres to “difficult” low-surface energy items (PVC piping, blow-molded equipment cases, ABS plastics, recycled plastics)



Colour		Order Reference				
Roll Size		101 mm x 30.40 m	75 mm x 30.40 m	57 mm x 30.40 m	29 mm x 30.40 m	12.70 mm x 30.40 m
White		B30C-4000-595-WT	B30C-3000-595-WT	B30C-2250-595-WT	B30C-1125-595-WT	B30C-500-595-WT
Yellow		B30C-4000-595-YL	B30C-3000-595-YL	B30C-2250-595-YL	B30C-1125-595-YL	B30C-500-595-YL
Red		B30C-4000-595-RD		B30C-2250-595-RD	B30C-1125-595-RD	B30C-500-595-RD
Blue		B30C-4000-595-BL		B30C-2250-595-BL	B30C-1125-595-BL	B30C-500-595-BL
Green		B30C-4000-595-GN		B30C-2250-595-GN	B30C-1125-595-GN	B30C-500-595-GN
Orange		B30C-4000-595-OR		B30C-2250-595-OR	B30C-1125-595-OR	B30C-500-595-OR
Black		B30C-4000-595-BK		B30C-2250-595-BK	B30C-1125-595-BK	B30C-500-595-BK
Brown		B30C-4000-595-BR		B30C-2250-595-BR	B30C-1125-595-BR	B30C-500-595-BR
Grey		B30C-4000-595-GY		B30C-2250-595-GY	B30C-1125-595-GY	B30C-500-595-GY
Gold		B30C-4000-595-GD		B30C-2250-595-GD	B30C-1125-595-GD	B30C-500-595-GD
Purple		B30C-4000-595-PL		B30C-2250-595-PL	B30C-1125-595-PL	B30C-500-595-PL
Clear		B30C-4000-595-CL		B30C-2250-595-CL	B30C-1125-595-CL	B30C-500-595-CL
Black		B30C-4000-595-BK		B30C-2250-595-BK	B30C-1125-595-BK	B30C-500-595-BK

B-569 HIGH PERFORMANCE POLYESTER

FOR LABELLING STAINLESS STEEL AND SMOOTH SURFACES

- Applies best to very smooth surfaces and ideal for mounting to rigid panels



Colour		Order Reference				
Roll Size		101 mm x 30.40 m	75 mm x 30.40 m	57 mm x 30.40 m	29 mm x 30.40 m	12.70 mm x 30.40 m
White		B30C-4000-569-WT	B30C-3000-569-WT	B30C-2250-569-WT	B30C-1125-569-WT	B30C-500-569-WT
Yellow		B30C-4000-569-YL		B30C-2250-569-YL	B30C-1125-569-YL	B30C-500-569-YL
Red		B30C-4000-569-RD		B30C-2250-569-RD	B30C-1125-569-RD	B30C-500-569-RD
Blue		B30C-4000-569-BL		B30C-2250-569-BL	B30C-1125-569-BL	B30C-500-569-BL
Light Blue		B30C-4000-569-LB		B30C-2250-569-LB	B30C-1125-569-LB	B30C-500-569-LB
Sky Blue		B30C-4000-569-SB		B30C-2250-569-SB	B30C-1125-569-SB	B30C-500-569-SB
Green		B30C-4000-569-GN		B30C-2250-569-GN	B30C-1125-569-GN	B30C-500-569-GN
Orange		B30C-4000-569-OR		B30C-2250-569-OR	B30C-1125-569-OR	B30C-500-569-OR
Black		B30C-4000-569-BK		B30C-2250-569-BK	B30C-1125-569-BK	B30C-500-569-BK
Brown		B30C-4000-569-BR		B30C-2250-569-BR	B30C-1125-569-BR	B30C-500-569-BR
Ochre		B30C-4000-569-OC		B30C-2250-569-OC	B30C-1125-569-OC	B30C-500-569-OC
Tan		B30C-4000-569-TN		B30C-2250-569-TN	B30C-1125-569-TN	B30C-500-569-TN
Grey		B30C-4000-569-GY		B30C-2250-569-GY	B30C-1125-569-GY	B30C-500-569-GY
Purple		B30C-4000-569-PL		B30C-2250-569-PL	B30C-1125-569-PL	B30C-500-569-PL
Pink		B30C-4000-569-PK		B30C-2250-569-PK	B30C-1125-569-PK	B30C-500-569-PK
Clear		B30C-4000-569-CL		B30C-2250-569-CL	B30C-1125-569-CL	B30C-500-569-CL

B-575 BRUSHED GOLD POLYESTER

- 2 year average outdoor durability
- Minimum application temperature 10°C



Colour	Order Reference
Roll Size	101.60 mm x 15.20 m
Gold	B30C-4000-575-GD

B-595 PRE-PRINTED PRE-CUT BLANK SIGN HEADERS

FOR CREATING MULTI-COLOUR ANSI AND OSHA SIGNS IN SECONDS

- Allows the printer to create multi-colour signs fast - in a single print pass
- Headers meet OSHA 1910.145 and ASME/ANSI Z535 standards
- Indoor/Outdoor grade material conforms to rough, irregular and “difficult to adhere to” surfaces (see B-595 on page 5)



Label Size W x H Labels per Roll	Order Reference 101 mm x 152 mm 175	57 mm x 75 mm 300	57 mm x 98 mm 250	29 mm x 72 mm 300
CAUTION	B30-25-595-ANSICA	B30-241-595-ANSICA		
DANGER	B30-25-595-ANSIDA	B30-241-595-ANSIDA		
WARNING	B30-25-595-ANSIWA	B30-241-595-ANSIWA		
NOTICE	B30-25-595-ANSINO	B30-241-595-ANSINO		
DANGER	B30-25-595-OSHADA	B30-241-595-OSHADA		
CAUTION	B30-25-595-OSHACA*	B30-241-595-OSHACA*		
	B30-25-595-BLNKWT	B30-241-595-BLNKWT	B30-219-595-BLNKWT	B30-242-595-BLNKWT
	B30-25-595-BLNKYL	B30-241-595-BLNKYL		

*Text area below header is yellow. Text area below all other signs is white

B-595 PRE-PRINTED RIGHT-TO-KNOW CHEMICAL LABELS

FOR QUICKLY CREATING NFPA AND COLOUR BAR LABELS

- Allows the printer to produce 5 colour chemical labels in a single print pass
- Indoor/Outdoor grade material withstands exposure to moisture, chemicals and handling (see B-595 on page 5)



Size - Width (mm) x Size - Height (mm)	Labels per Roll	Order Reference
101 mm x 159 mm	170	B30-243-595-NFPA
57 mm x 108 mm	240	B30-245-595-NFPA
101 mm x 101 mm	240	B30-161-595-NFPA
57 mm x 57 mm	365	B30-244-595-NFPA B30-244-595-DIAM
29 mm x 82.5 mm	300	B30-246-595-NFR
		B30-243-595-CB
		B30-245-595-CB
		B30-244-595-CB
		B30-244-595-HMIG
		B30-246-595-HMIG

B-526 BRADYGLO™ HIGH INTENSITY PHOTOLUMINESCENT TAPE

FOR GLOW-IN-THE DARK IDENTIFICATION - UP TO 10 HOURS!

- Designed for directional and evacuation marking
- Ideal for marking emergency utility shut-offs, fire extinguishers, alarm pulls and vital equipment controls






Colour	Order Reference	101 mm x 15.20 m	57 mm x 15.20 m	29 mm x 15.20 m
Luminous green 	B30C-4000-526	B30C-4000-526	B30C-2250-526	B30C-1125-526

B-584 RETRO-REFLECTIVE TAPE

FOR HIGHLY REFLECTIVE IDENTIFICATION THAT SHINES BACK BRIGHTLY WHEN STRUCK BY LIGHT

- Ideal for labelling outdoor utility poles and pedestals, jobsite equipment and roof-top equipment
- Recommended low light or inclement weather conditions





Colour	Order Reference	101.60 mm x 15.20 m	57.15 mm x 15.20 m	28.58 mm x 30.40 m
Reflective Silver 	B30C-4000-584-SL	B30C-4000-584-SL	B30C-2250-584-SL	B30C-1125-584-SL
Reflective Yellow 	B30C-4000-584-YL	B30C-4000-584-YL	B30C-2250-584-YL	B30C-1125-584-YL
Reflective Orange 	B30C-4000-584-OR	B30C-4000-584-OR	B30C-2250-584-OR	B30C-1125-584-OR

B-595 PRE-CUT BLANK LABELS

FOR GENERAL PURPOSE, PEEL-OFF-AND-APPLY IDENTIFICATION

- Ideal for a wide range of labelling applications
- Includes 2 sizes that are pre-cut and pre-sized to fit heavy-duty rigid tags
- Indoor/Outdoor grade material
- Conforms well to rough, irregular and "difficult to adhere to" surfaces (see B-595 on page 5)



Colour	Order Reference	101 mm x 152 mm	57 mm x 98 mm	57 mm x 75 mm	29 mm x 72 mm
Label Size W x H					
Labels Per Roll	175	250	300	300	
White 	B30-25-595-BLNKWT	B30-219-595-BLNKWT	B30-241-595-BLNKWT	B30-242-595-BLNKWT	
Yellow 	B30-25-595-BLNKYL		B30-241-595-BLNKYL		

B-551 Non-Adhesive Polyester Tag Stock

FOR SAFETY, LOCKOUT AND GENERAL PURPOSE HANGING TAGS

- Non-adhesive, polyester stock
- Easy to hole-punch; optional snap-in grommets available
- Meets OSHA 50lb. pullout spec. for lockout tags



Colour	Roll Size	Order Reference	108 mm x 15.20 m	83 mm x 15.20 m	64 mm x 15.20 m
White	<input type="checkbox"/>	B30C-4250-551-WT		B30C-3250-551-WT	B30C-2500-551-WT

B-581 Repositionable Vinyl

FOR 5S AND LEAN APPLICATIONS

- Aggressive adhesive stays in place but removes cleanly without leaving adhesive residue
- Ideal for temporary, removable and repositionable labels, like 5S and lean inventory labels



Colour	Roll Size	Order Reference	101 mm x 30.40 m	57 mm x 30.40 m	29 mm x 30.40 m	12.50 mm x 30.40 m
White	<input type="checkbox"/>	B30C-4000-581-WT		B30C-2250-581-WT	B30C-1125-581-WT	B30C-500-581-WT
Yellow	<input type="checkbox"/>	B30C-4000-581-YL		B30C-2250-581-YL	B30C-1125-581-YL	B30C-500-581-YL

B-509 Printable Magentic Supply

EASIEST AND QUICKEST MATERIAL FOR REMOVING AND REPOSITIONING

- Non-adhesive magnetic material that can be printed onto directly
- Ideal for reusable and repositionable identification applications



Colour	Roll Size	Order Reference	108 mm x 7.60 m	64 mm x 7.60 m
White	<input type="checkbox"/>	B30C-4250-509-WT		B30C-2500-509-WT
Yellow	<input type="checkbox"/>	B30C-4250-509-YL		B30C-2500-509-YL

B-549 Cold Temperature Application Polyester

FOR IDENTIFICATION IN TEMPERATURES AS COLD AS -40°C

- Special adhesive permanently adheres to extremely cold surfaces
- Can be applied in -23° C and lasts in -40° C
- Ideal for cold storage warehouses, fridges, freezers and short-term winter outdoor use

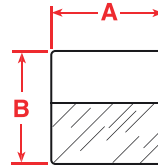


Colour	Roll Size	Order Reference	101 mm x 30.40 m	57 mm x 30.40 m	29 mm x 30.40 m
White	<input type="checkbox"/>	B30C-4000-549-WT		B30C-2250-549-WT	B30C-1125-549-WT
Yellow	<input type="checkbox"/>	B30C-4000-549-YL		B30C-2250-549-YL	B30C-1125-549-YL

B-427 SELF-LAMINATING WIRE & CABLE LABELS

FOR WIRE AND CABLE IDENTIFICATION: OUR MOST POPULAR WIRE AND CABLE LABELS

- Conformable material designed to adhere to highly curved surfaces, wires and cables
- Features a white printable area with a clear “tail” that wraps around marker
- Clear tail serves as over-laminate to protect the text, providing superior resistance to abrasion, dirt, oils, solvents, water and excessive handling



Order Reference	For Data Cables Sized to Fit	Wire Gauge	Label Width A (mm)	Label Height B (mm)	Write-On Area C (mm)	Labels per Roll
B30-228-427	-	16-10 Gauge (4.1 mm Max dia)	12.70	19.05	9.53	4000
B30-232-427	2 pair Fibre/Coaxial; Single/Multi Mode	12-10 Gauge (5.3 mm Max dia)	12.70	25.40	9.53	3000
B30-231-427	Cat 5; 4 pair UTP Copper	10-4 Gauge (6.8 mm Max dia)	12.70	31.75	12.70	2800
B30-229-427	-	16-10 Gauge (4.1 mm Max dia)	25.40	19.05	9.53	4000
B30-179-427	2 pair Fibre/Coaxial; Single/Multi Mode	12-10 Gauge (5.3 mm Max dia)	25.40	25.40	9.53	3300
B30-227-427	Cat-5; 4 pair UTP Copper, Fibre, Coaxial	10-4 Gauge (6.8 mm Max dia)	25.40	31.75	12.70	2750
B30-233-427	Cat-5; 4 pair UTP Copper, Fibre, Coaxial	10-4 Gauge (8.1 mm Max dia)	25.40	38.10	12.70	2300
B30-223-427	25 pair Copper; 4-12 pair Fibre; Coaxial	3 Gauge-2/0 (13.4 mm Max dia)	25.40	63.50	19.05	1500
B30-225-427	Cat-5; 4 pair UTP Copper	10-4 Gauge (6.8 mm Max dia)	38.10	31.75	12.70	1800
B30-234-427	Cat-5; 4 pair UTP Copper, Fibre, Coaxial	10-4 Gauge (8.1 mm Max dia)	38.10	38.10	12.70	1500
B30-224-427	25 pair Copper; 4-12 pair Fibre; Coaxial	3 Gauge-2/0 (13.4 mm Max dia)	38.10	63.50	19.05	1000
B30-188-427	50 pair Copper; 24 pair Fibre; Backbone	3/0- kcmil (21.6 mm Max dia)	38.10	101.60	25.40	600
B30-226-427	100 pair Copper; 36 pair Fibre; Backbone	3/0- kcmil (21.6 mm Max dia)	38.10	152.40	38.10	400

* Note: Use Black ribbon B30-R4300 with these part numbers

B-438 TAMPER-EVIDENT METALLISED POLYESTER TAPE

FOR SECURE IDENTIFICATION THAT INDICATES IF IT HAS BEEN TAMPERED WITH

- B-438 tape leaves a “checkerboard” footprint if removed and a checkerboard also appears on the top surface of the label to prevent label re-use
- Ideal for product rating plates, product warranty labels and asset identification labels



Colour	Order Reference	25 mm x 25 mm	25 mm x 75 mm	50 mm x 75 mm	75 mm x 30.40 m
Metallised Silver	1225	1225	1225	650	1
	B30-17-438	B30-18-438	B30-22-438	B30-222-438	B30C-3000-438

B-565 HIGH TEMP METALLISED POLYESTER TAPE

- B-565 material has a high upper temperature rating and is not tamper-evident
- Ideal for product rating labels, product warranty labels and asset identification labels



Colour	Order Reference	101 mm x 30.40 m	57 mm x 30.40 m	29 mm x 30.40 m
Silver	330C-4000-565-SL	330C-4000-565-SL	B30C-2250-565-SL	B30C-1125-565-SL

BBP™31 SIGN AND LABEL PRINTER

The BBP™31 Sign and Label Printer is exactly how a printer is supposed to be. It's easy to use. It's packed with functionalities and best of all, it's got so many material options that this one printer can handle all of the labelling needs in your facility



Order Reference	Order Ref.	Description
BBP™31 QWERTY UK PRINTER	710731	BBP31 Sign and Label Printer -240 V
BBP™31 QWERTY EU PRINTER + MW	710732	BBP31 Sign and Label Printer - 220V - with MarkWare Signmaking Software
BBP™31 QWERTZ PRINTER + MW	710733	BBP31 Sign and Label Printer - 220V - with MarkWare Signmaking Software
BBP™31 AZERTY PRINTER + MW	710734	BBP31 Sign and Label Printer - 220V - with MarkWare Signmaking Software
BBP™31 CYRILLIC PRINTER + MW	710735	BBP31 Sign and Label Printer - 220v - with MarkWare Signmaking Software
BBP™31 QWERTY UK PRINTER + MW	710736	BBP31 Sign and Label Printer - 240V - with MarkWare Signmaking Software
BBP™31 QWERTY EU PRINTER	710737	BBP31 Sign and Label Printer -220 V
BBP™31 QWERTZ PRINTER	710738	BBP31 Sign and Label Printer -220 V
BBP™31 AZERTY PRINTER	710739	BBP31 Sign and Label Printer -220 V
BBP™31 CYRILLIC PRINTER	710740	BBP31 Sign and Label Printer -220 V

ACCESSORIES FOR BBP™31 SIGN AND LABEL PRINTER

Order Reference	Order Ref.	Description
B31-WIPER	142114	BBP31 Media Wiper 5 pack
B31-STYLUS	142115	BBP31 Replacement Stylus 3 pack
B31-CCT	142116	BBP31 Cutter Tool
B31-DC	142117	BBP31 Dust Cover



HEAVY DUTY PRINT RIBBONS

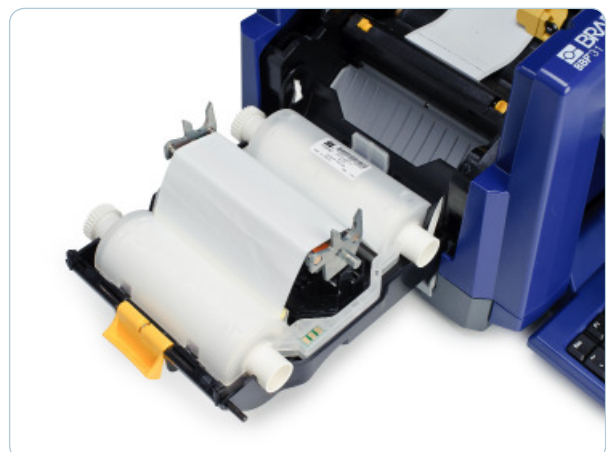
"DROP & CLICK" PRINT RIBBONS FOR QUICK AND EASY SUPPLY CHANGES

- Tough, smear-proof ribbons that produce long-lasting printed text
- Print can withstand years in industrial areas and outdoor conditions
- Ribbons ship in self-contained cartridges that drop straight into the printer with a "click"
- No calibrating, no threading, no waste, no hassle



Colour	Order Reference
Black	B30-R10000
Blue	B30-R10000-BL
Green	B30-R10000-GN
Magenta	B30-R10000-MA
Orange	B30-R10000-OR
Red	B30-R10000-RD
White	B30-R10000-WT
Yellow	B30-R10000-YL
Black	B30-R4300*
White	B30-R4400-WT

*Use B-30-R4300 ribbon with B-427 and B-438 materials only



BBP™31 SIGN AND LABEL PRINTER - TECHNICAL DATA

Specifications	
Print Resolution (dpi)	300
Print Speed (mm/sec)	76
Print Technology	Thermal Transfer
Max. Print Width	101 mm
Max. Print Length	3000 mm
Max. Label Width	101 mm
Max. Roll Length	30 m
Printing Options	
Built-in Symbols	221
Built-in Fonts	5 fonts
Colour Capability	Monocolour only
Multi-line Print	More than 30
Print Rotation	Object rotation: 90°, 180°, 270°
Serialisation	Numeric and Alphabetic
Bar Code Capability	5 barcodes : code 39; code 128 auto; EAN/JAN-13; interleaved 2 of 5; UPCA
Media	
Recommended Usage/Labels per Day	500
Materials Supported	Vinyl B-595, High Performance Polyester B-569; BradyGlo B-526; Retro-reflective Tape B-584; Repositionable Vinyl B-581; Magnetic Tape B-509; Cold temperature Polyester B-549; Tamper-evident Metallised Polyester Tape B-438, Self-laminating Vinyl B-427, Non-Adhesive Polyester Tag Stock B-551, Brushed Gold Polyester B-575; Metallised Polyester B-565
Electronics	
Memory - Ram/Flash	50MB internal memory to store 1.000's of labels internally in the printer. External storage on USB drive.
Power Supply	Internal
Connectivity	1 USB for printing; 2 USB for connecting USB drives
Peripheral Printing (Connected to a PC)	Yes, Printing from MarkWare
Physical Properties	
Depth x Height x Width	280 mm x 225 mm x 305 mm
Weight (kg)	6.5
Display	Large, full colour touch screen with "drag & drop" moving and sizing capabilities
Keyboard	Full size fold down keyboard in 4 versions: AZERTY, QWERTY, QWERTZ, Cyrillic QWERTY
Environmental Conditions	
Operating Temperature	10°C - 40°C
Warranty	
Warranty	12 months



Brady Corporation

Our mission is To Identify and Protect Premises, Products and People



Company Overview

BRADY was founded in 1914 in Eau Claire, Wisconsin, as W.H. BRADY Co., and renamed BRADY Corporation in 1998. The company began selling products internationally in 1947. In 1984, BRADY went public, with stock trading on the Nasdaq Stock Market, and in 1999, moved trading of its stock to the New York Stock Exchange, where it trades under the symbol BRC. The company's global headquarters is in Milwaukee, Wisconsin.

Brady manufactures and markets:

- products for identification and safety applications such as signs and markers, and printing systems and software to produce identification products on site and on demand.
- products for wire identification, including labelling materials and tools for wire and cable marking in the electrical and telecommunication markets
- high-performance identification products, including labels and signs that remain legible and highly adhesive even in harsh environments
- precision die-cut parts, including custom die-cut and slit materials for use in mobile handset, consumer electronics, medical, hard disk drive and automotive markets
- identify people and enhance security by ensuring the right persons are in the right places at the right time

Operations – Some facts:

- 6600 employees around the world
- Operations in 29 countries
- Distribution in more than 100 countries through more than 4,400 distributor partners



BRADY WORLDWIDE

Australia	612-8717-6300
Brazil	55-11-3686-4720
Canada	1-800-263-6179
China (Beijing)	86-10-6788-7799
China (Shanghai)	86-21-6886-3666
China (Wuxi)	86-510-528-2222
Hong Kong	852-2359-3149
Japan	81-45-461-3600
Korea	82-31-451-6600
Latin America	1-414-540-5560
Malaysia	60-4-646-2700
Mexico	525-399-6963
New Zealand	61-2-8717-2200
Philippines	63-2-658-2077
Singapore	65-6477-7261
Taiwan	886-3-327-7788
Thailand	66-2-793-9200
USA	1-800-537-8791

Your distributor

MAKRO IDENT - Lockout-Tagout Solutions
Bussardstraße 24
82008 Unterhaching

TEL. 089-615658-28
FAX. 089-615658-25

www.makroident.de - www.lockout-tagout.de

© 2011 Brady Worldwide, Inc. All Rights Reserved.

