

BRADY B-1 ENGRAVED TAGS AND SIGNS

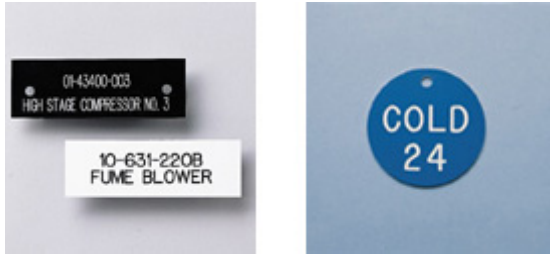
TDS No. B-1

Effective Date: 01/29/2001

Description:

Brady B-1 engraved tags and signs are a rigid laminate in which colored top and bottom layers of the material are thermoset with a contrasting color core.

Details:



Use:

Brady B-1 engraved tags and signs are designed for both indoor and outdoor use.

Material Construction:

Blended plastic extruded sheet

Special Properties:

The engraving material is fire and abrasion resistant.

Standard Material Colors:

Yellow/black, blue/white, green/white, red/white, white/black, green/black, orange/black, yellow/magenta

Thickness (ASTM D 1593):

Total: 0.062 in. (1.6 mm)

Tensile Strength (ASTM D 638):

6500 psi (46 MPa)

Flexural Properties (ASTM D 790):

Yield: 16,000 psi (112 MPa)

Modulus: 39,000 psi (273 MPa)

Weight (ASTM D 790):

0.38 lb./ft.² (1.9 kg/m²)

Abrasion Resistance (Method 5306 of U.S. Federal Test Method Std. No. 191A):

CS-10 wheels, 500 g wts.

Screen printed header withstands up to 400 cycles

H-22 wheels, 1000 g wts.

Substrate withstands up to 8000 cycles

Gloss (ASTM D 523):

90 Gardner Units

Service Temperature:

-40°F to 193°F (-40°C to 90°C)

Flammability (ASTM D 635):

Burn Rate: 0.83 in./min. (2.1 cm/min.)

Average Outdoor Durability:

5-8 years (Average expected outdoor life of product will depend on user definition of failure and climatic conditions.)

Chemical Resistance:

REAGENT	7 DAY IMMERSION	DIP TEST	RUB TEST
30% Sulfuric Acid	NE	NE	NE
10% Sulfuric Acid	NE	NE	NE
30% HCl	NE	NE	NE
10% HCl	NE	NE	NE
50% NaOH	NE	NE	NE
10% NaOH	NE	NE	NE
Methyl Ethyl Ketone	F	F	NE
Acetone	F	F	NE
1,1,1-Trichloroethane	F	F	NE
Methanol	F	NE	NE
IPA (Isopropanol)	F	NE	NE
ASTM #3 Oil	NE	NE	NE
SAE 20 Oil	NE	NE	NE
Alconox®	NE	NE	NE
Toluene	F	F	NE
Mineral Spirits	NE	NE	NE
Glacial Acetic Acid	F	F	NE
5% Acetic Acid	NE	NE	NE
Diesel Fuel	NE	NE	NE
Heptane	NE	NE	NE
Cellosolve Acetate	F	F	NE
Conc. Ammonia	NE	NE	NE
10% Ammonia	NE	NE	NE
Turpentine	NE	NE	NE
Kerosene	NE	NE	NE
Water	NE	NE	NE
Gasoline	F	NE	NE

NE = No Effect

NT = Not Tested

F = Failed (affected Sample)

7 Day Immersion: Immersed in reagent for 7 days.

Dip Test: Five 10 minute dips in reagent with 30 minute recovery.

Rub Test: Rubbed sample for 1 minute with swab soaked in reagent.

Shelf Life:

Unlimited when stored at 70°F (21°C) and 40% to 50% R.H.

Trademarks:

Alconox® is a registered trademark of Alconox Co.

Signmark® is a registered trademark of Brady Worldwide, Inc.

ASTM: American Society for Testing and Materials (U.S.A.)

SAE: Society of Automotive Engineers (U.S.A.)

All S.I. Units (metric) are mathematically derived from the U.S. Conventional Units.

Note: All values shown are averages and should not be used for specification purposes.

Test data and test results contained in this document are for general information only and shall not be relied upon by Brady customers for designs and specifications, or be relied on as meeting specified performance criteria. Customers desiring to develop specifications or performance criteria for specific product applications should contact Brady for further information.

Product compliance information is based upon information provided by suppliers of the raw materials used by Brady to manufacture this product or based on results of testing using recognized analytical methods performed by a third party, independent laboratory. As such, Brady makes no independent representations or warranties, express or implied, and assumes no liability in connection with the use of this information.

WARRANTY

Brady products are sold with the understanding that the buyers will test them in actual use and determine for themselves their adaptability to their intended uses. Brady warrants to the buyers that its products are free from defects in material and workmanship, but limits its obligation under this warranty to replacement of the product shown to Brady's satisfaction to have been defective at the time Brady sold it. This warranty does not extend to any persons obtaining the product from the buyers. This warranty is in lieu of any other warranty, express or implied, including, but not limited to, any implied warranty of merchantability or fitness for a particular purpose, and of any other obligations or liability on Brady's part. Under no circumstances will Brady be liable for any loss, damage, expense, or consequential damages of any kind arising in connection with the use, or inability to use, Brady's products.

Copyright 2016 Brady Worldwide, Inc. | All Rights Reserved
Material may not be reproduced or distributed in any form without written permission.

Brady North America | 6555 W. Good Hope Rd | Milwaukee, WI 53223 | USA | Tel: 414-358-6600 | Fax: 800-292-2289